

Flanged Check Valves FC Series



This flanged Controllable Anti-Pollution Check Valve is dedicated to be installed as Backflow Prevention device (code EN1717: EA) in potable water installations and other sanitary appliances.

The device can also be used in processes like distribution networks and pump houses.



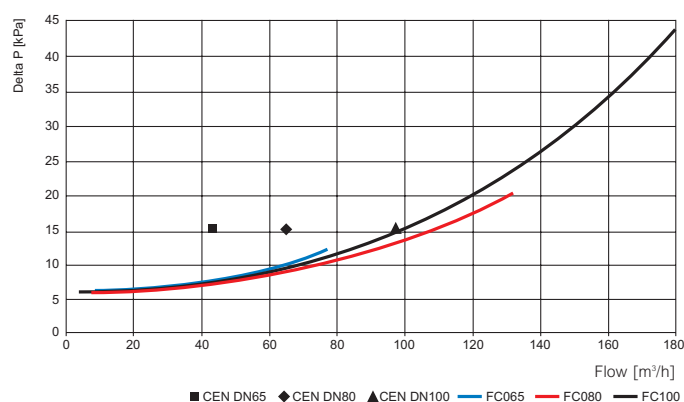
This flanged Controllable Anti-Pollution Check Valve is dedicated to be installed as Backflow Prevention device (code EN1717: EA) in potable water installations and other sanitary appliances. The device can also be used in processes like distribution networks and pump houses.

Features of the FC Check Valve:

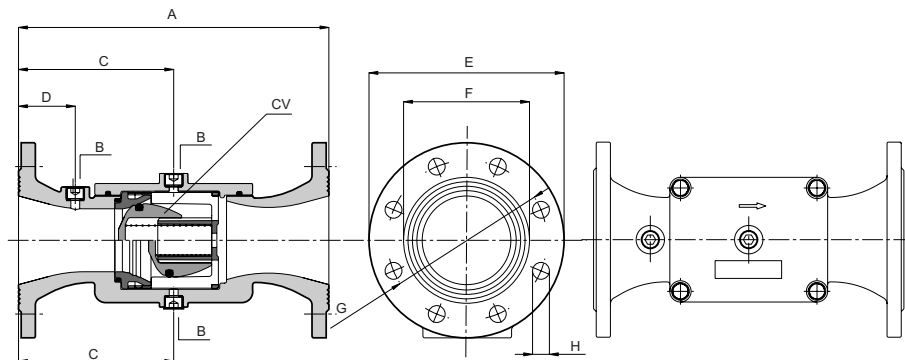
- Compact construction
- Construction and performance in compliance with national standards and European standard EN13959
- Modular Check Valve cartridge for fast and easy maintenance
- No internal parts to be lost whilst replacing the cartridge
- Low pressure loss
- Ranging from DN 65 (DN 60) up to DN 250 inclusive and according to DIN PN16



Pressure loss curve FC065, FC080, FC100



Dimensions



Articlenumber	Type	DN	CV	A	B	C	D	E	F	G	H
308065361	FC065	(60) 65	CS100	290	G1/2	145	37.5	185	118	(135) 145	4 x 19
308080361	FC080	80	CS100	310	G1/2	155	44	200	132	160	8 x 19
308100361	FC100	100	CS100	350	G1/2	175	64	220	156	180	8 x 19
308125361	FC125	125	CS150	400	G1/2	200	47	250	184	210	8 x 19
308150361	FC150	150	CS150	480	G1/2	240	87	285	211	240	8 x 23
308200361	FC200	200	CS250	600	G1/2	300	71	340	266	295	12 x 23
308250361	FC250	250	CS250	730	G1/2	365	102	405	319	355	12 x 28

Material specifications

Body / cover ductile iron
 Polymer parts PPO / PP
 Rubber parts NBR

Approvals

In accordance to the new European Anti Pollution Check Valve Standard EN 13959

The photos, illustrations and descriptions contained in this brochure are solely intended as an indication. Watts Industries reserves the right to make technical and design changes to its products without prior notice.